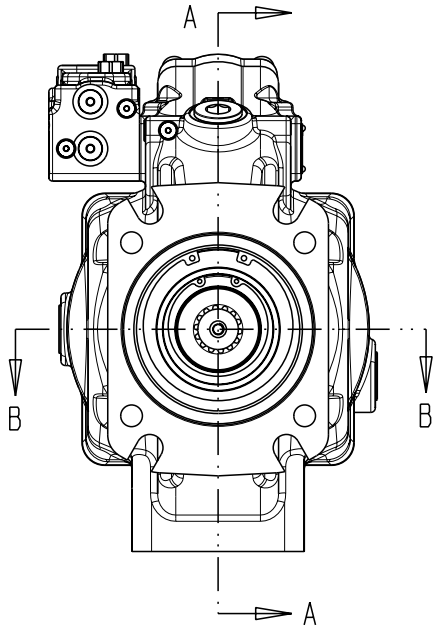
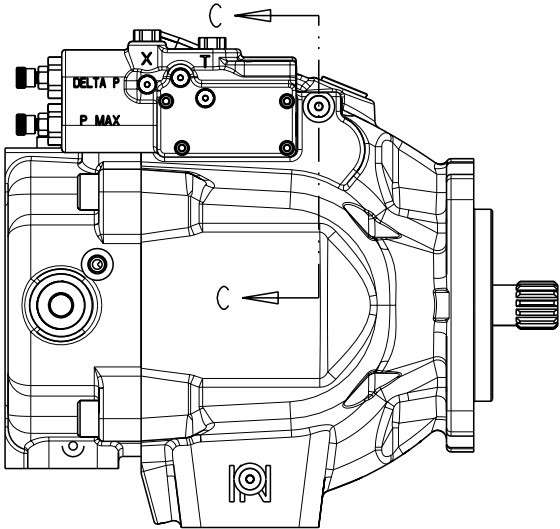
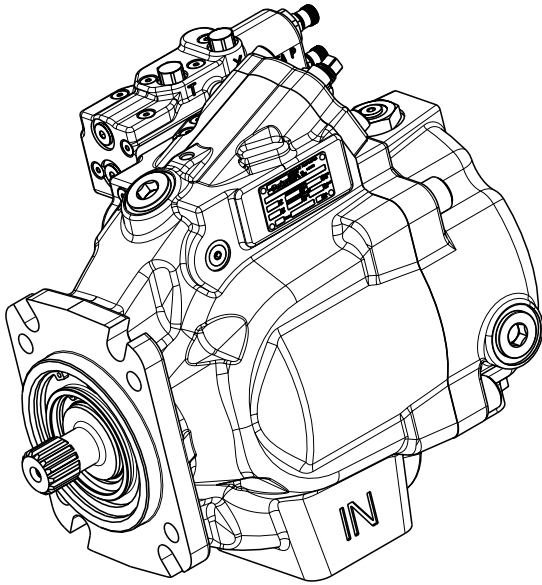
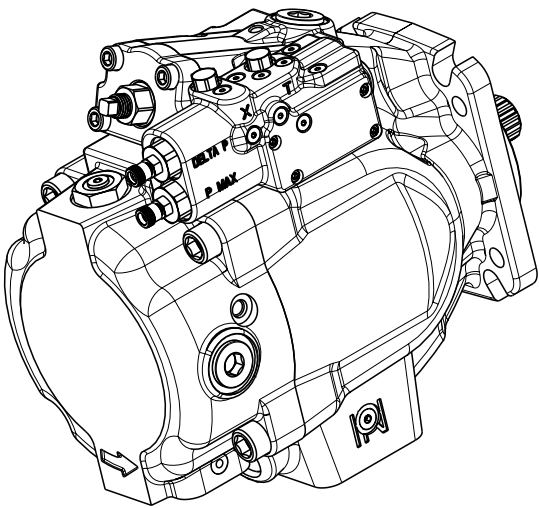
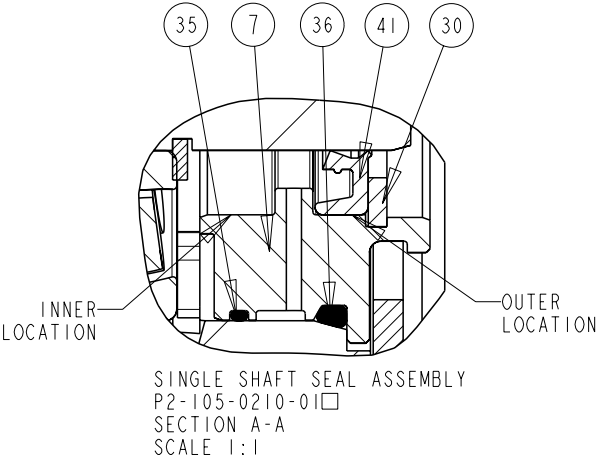
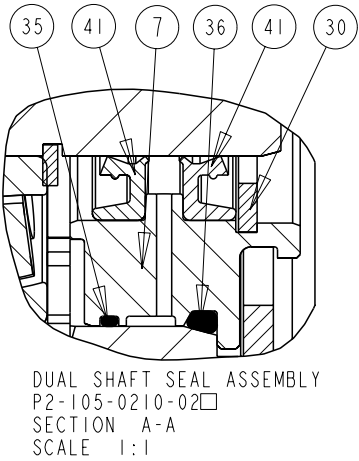
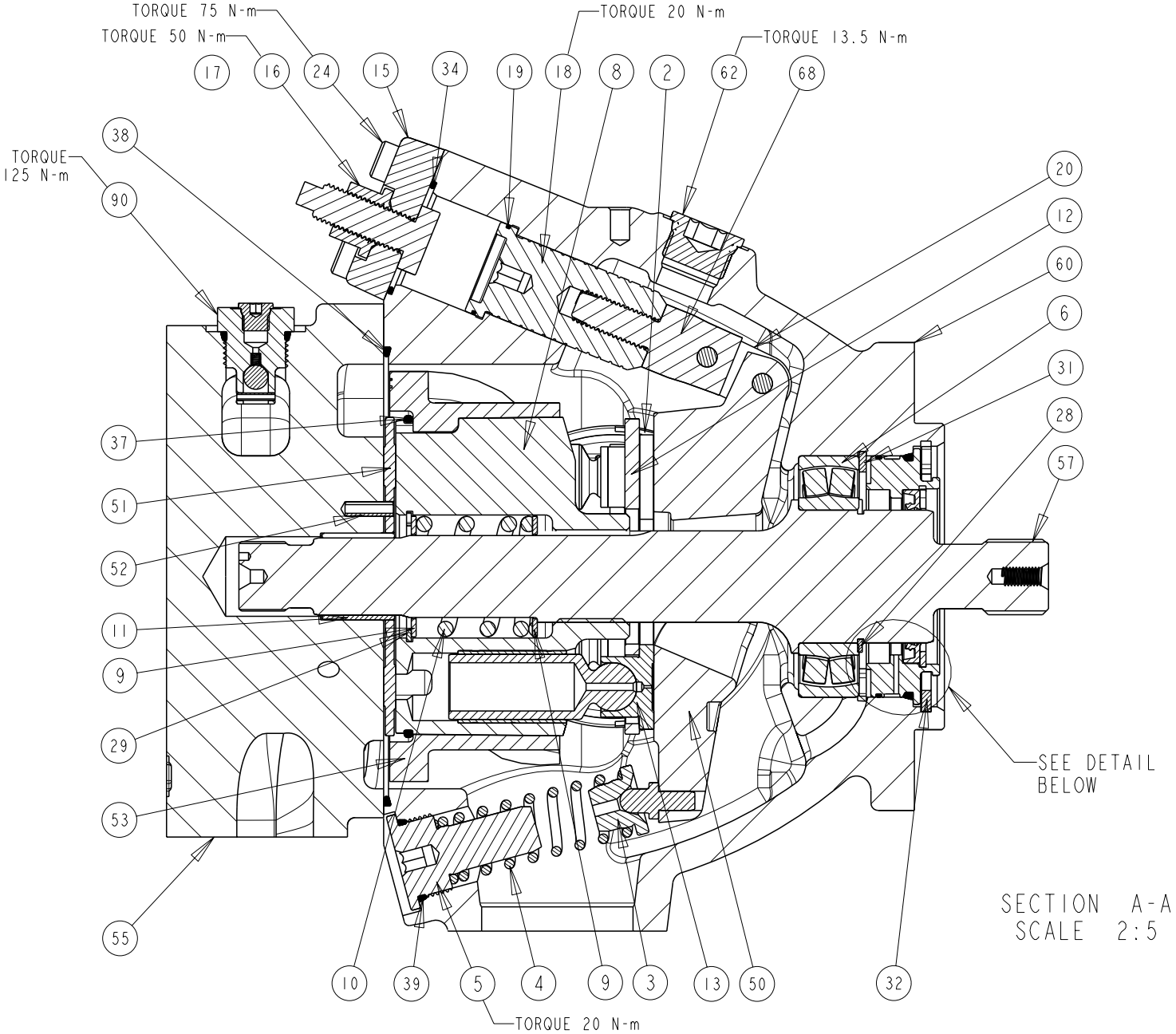


TITLE	SERVICE PARTS P3105 DESIGN SERIES II	DRAWING NUMBER	P2-105-0404	REVISION	A	STATUS	PR	SHEET 1 OF 7
-------	---	----------------	-------------	----------	---	--------	----	--------------

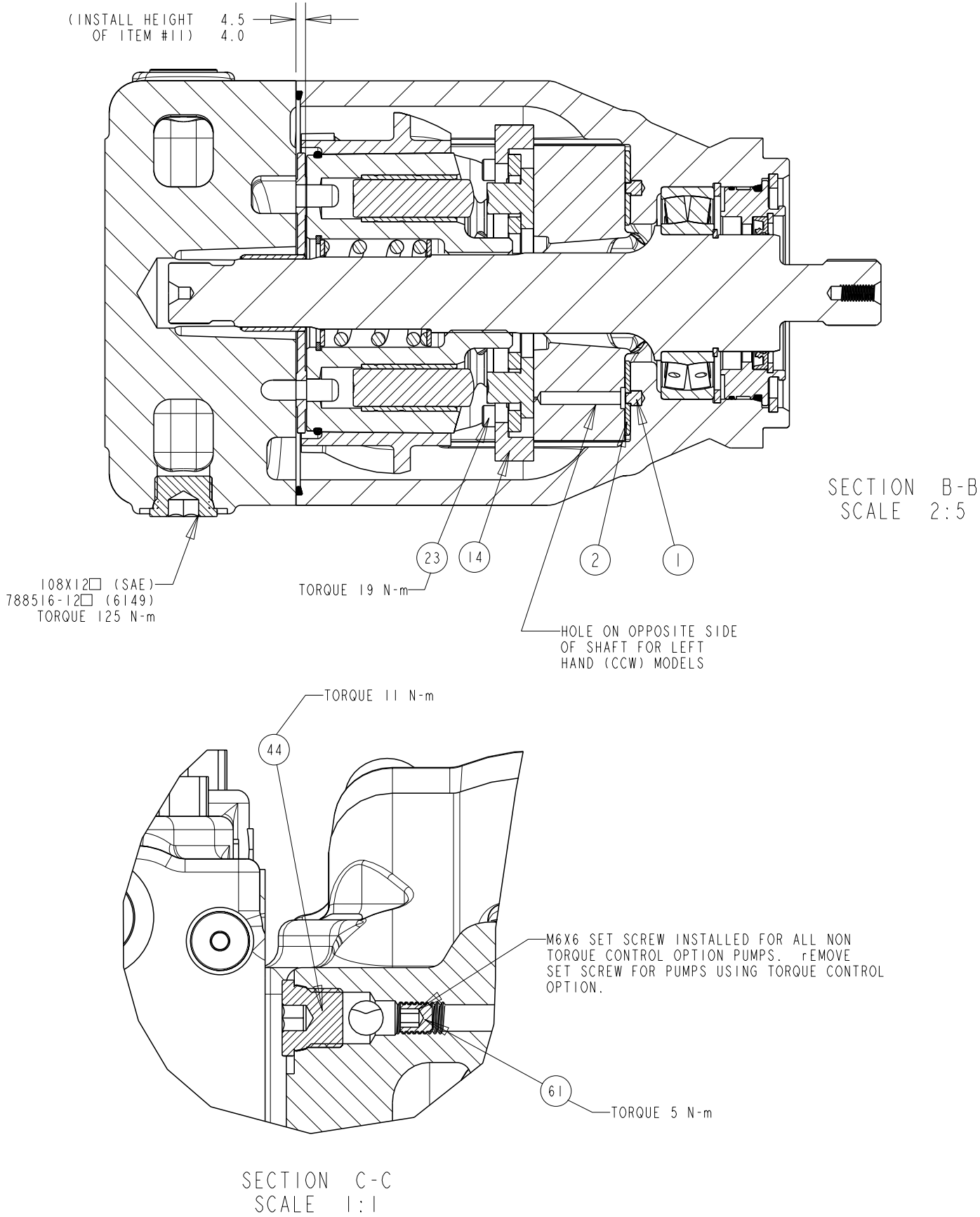
DRAWN BY	E. BOONE	DATE	15APR02	CHANGED BY	B. LARKIN	DATE	23MAY02	ECN NUMBER	133522
----------	----------	------	---------	------------	-----------	------	---------	------------	--------



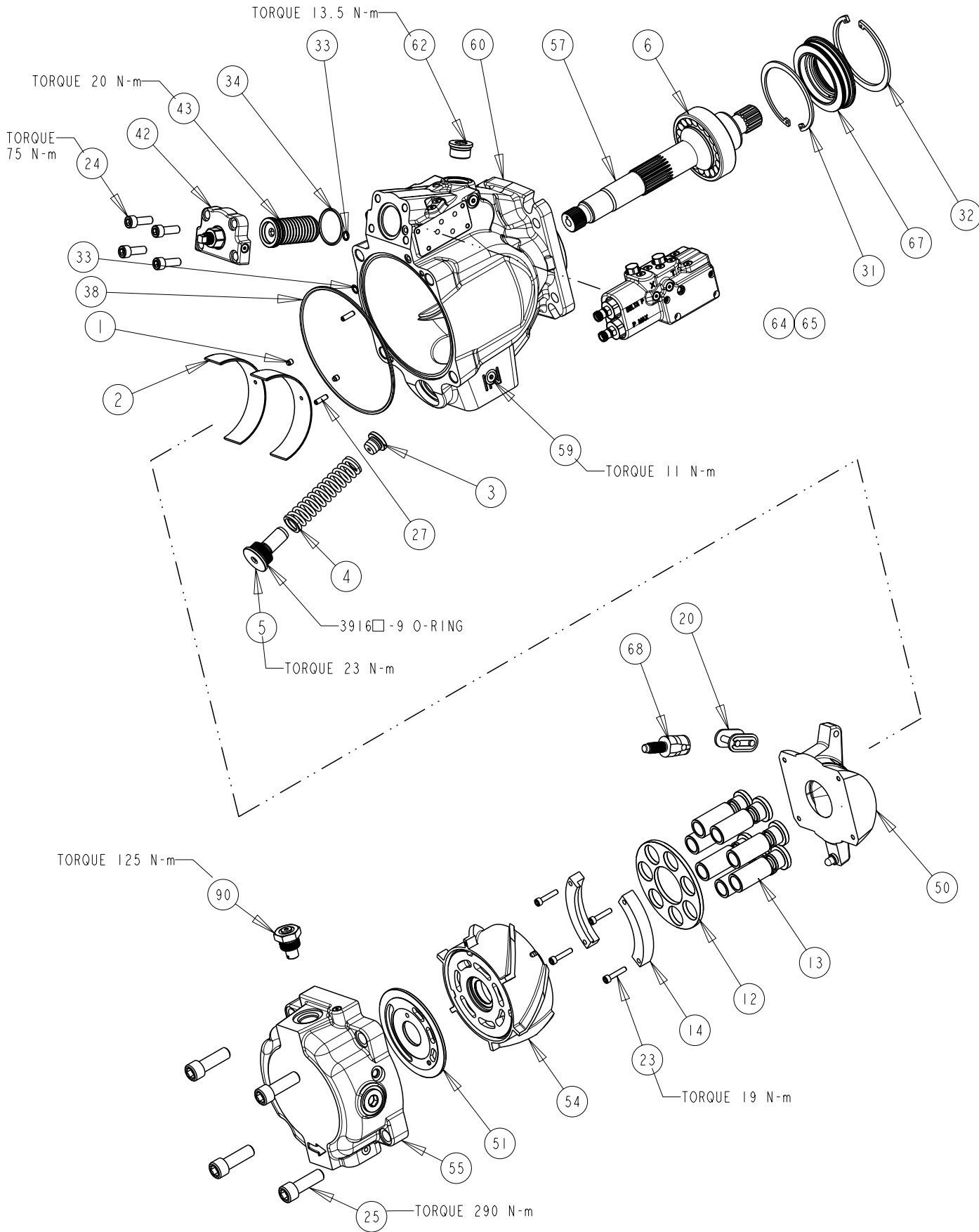
NOTES:
1 PUMP SHOWN IS A RIGHT HAND (CW) ROTATION PUMP. LEFT HAND (CCW) ROTATION PUMPS HAVE OUTLET GAUGE PORT REVERSED.



TITLE	DRAWING NUMBER	REVISION	STATUS	SHEET 2 OF 7
SERVICE PARTS P3105 DESIGN SERIES II	P2-105-0404	A	PR	



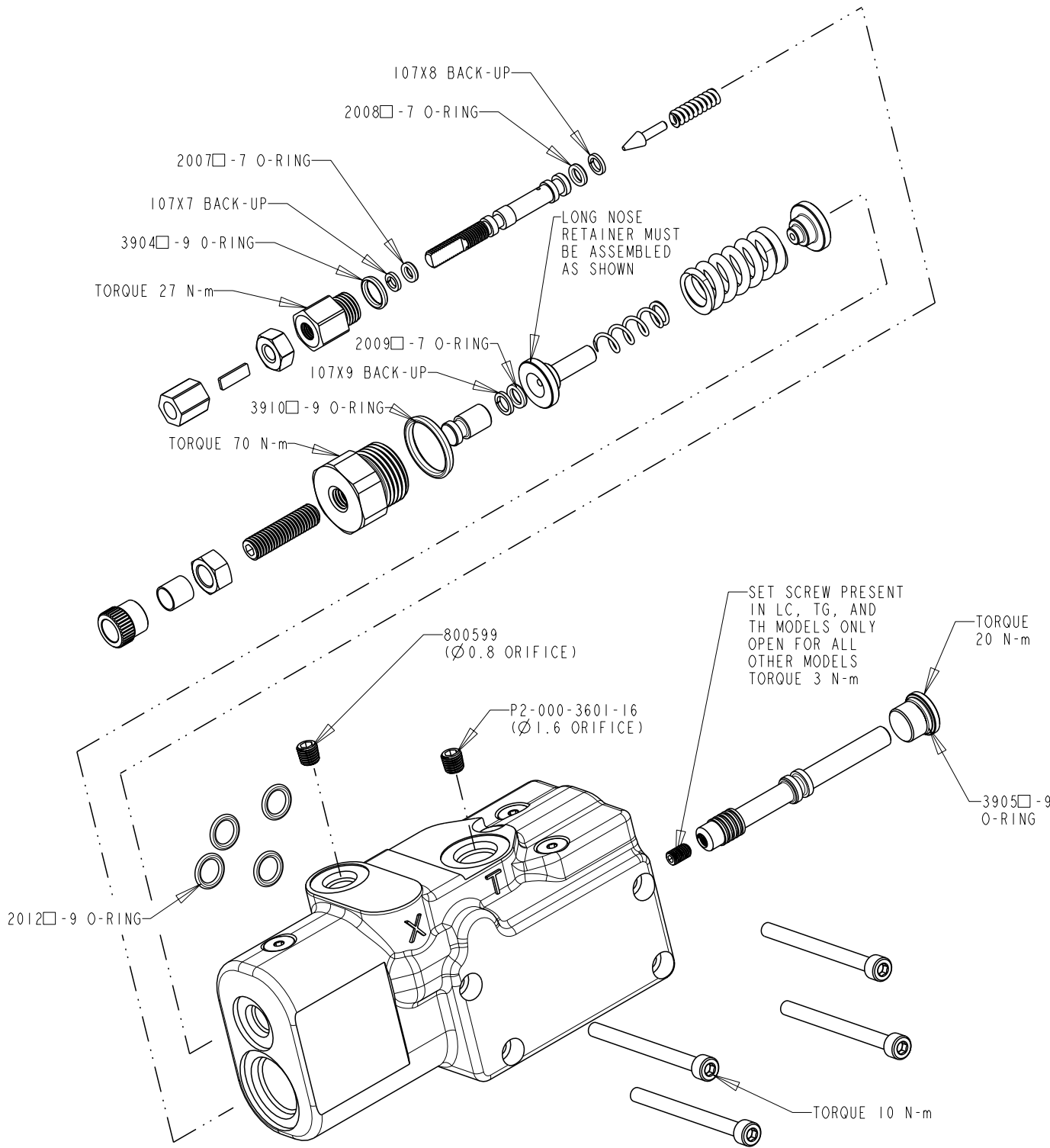
DRAWN BY	DATE	CHANGED BY	DATE	ECN NUMBER
E. BOONE	15APR02	B. LARKIN	23MAY02	133522



TITLE	SERVICE PARTS P3105 DESIGN SERIES 11	DRAWING NUMBER	P2-105-0404	REVISION	A	STATUS	PR	SHEET 3 OF 7
-------	---	----------------	-------------	----------	---	--------	----	--------------

COMPENSATOR KITS

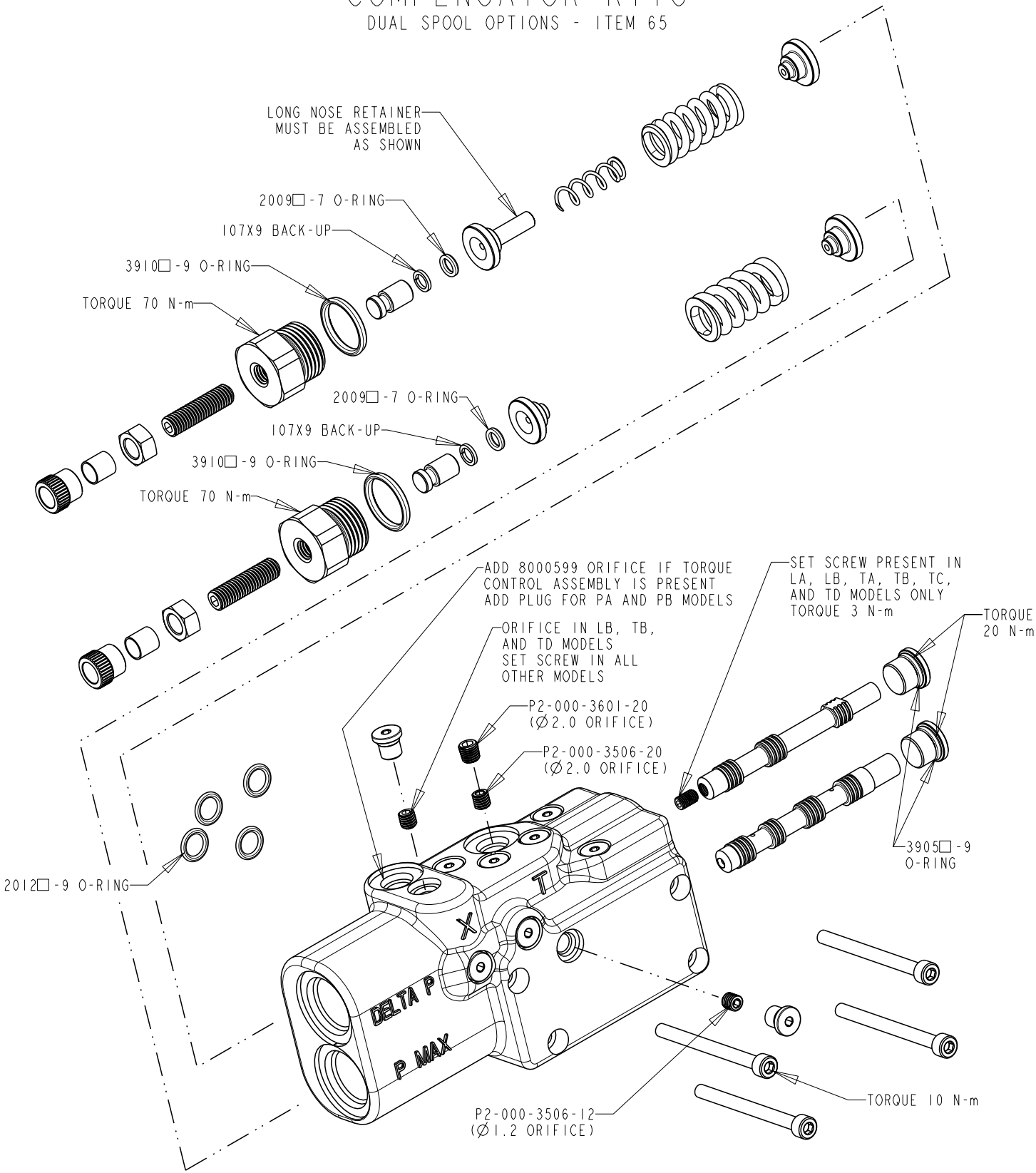
SINGLE SPOOL OPTIONS - ITEM 64



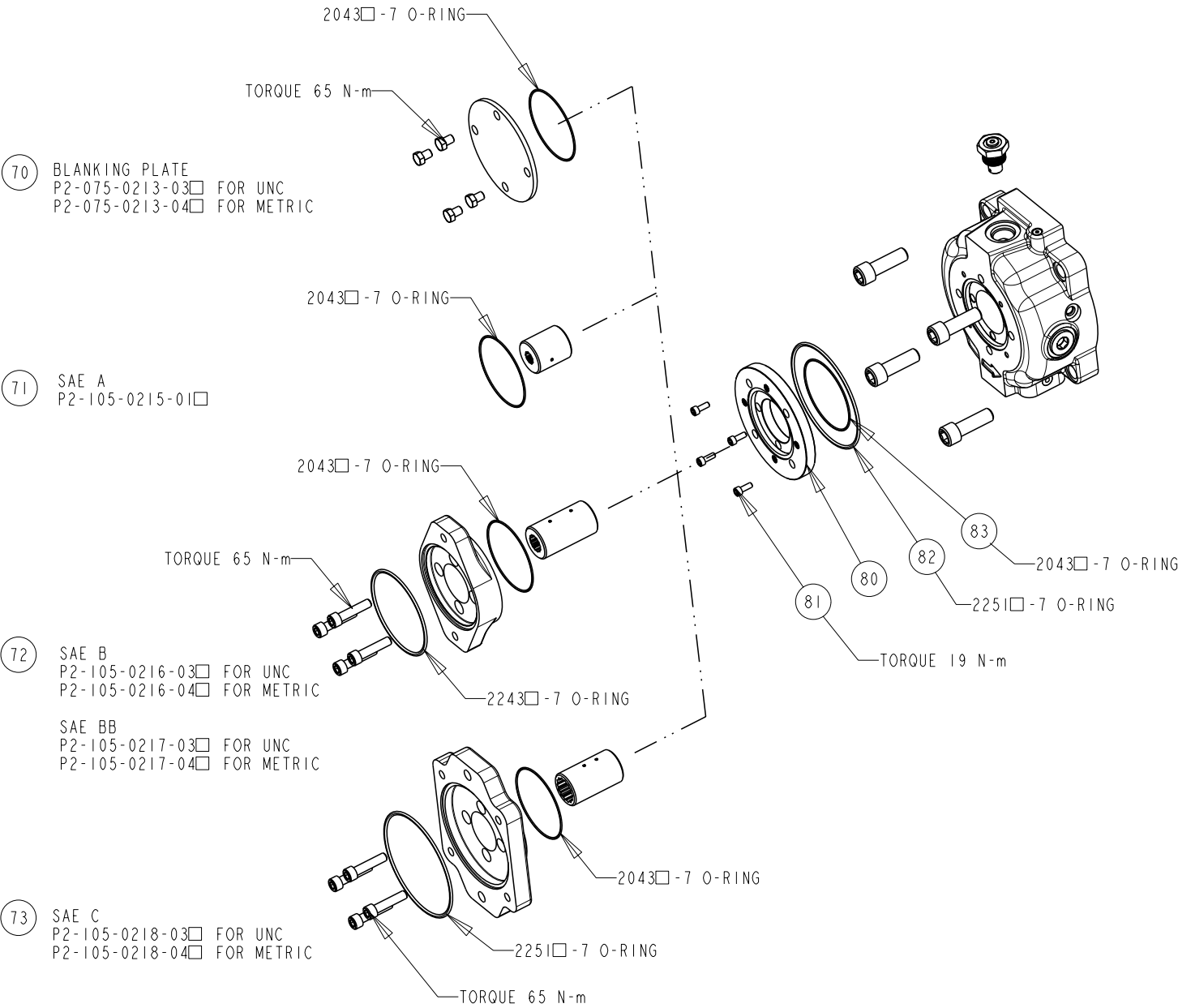
DRAWN BY	E. BOONE	DATE	15APR02	CHANGED BY	B. LARKIN	DATE	23MAY02	ECN NUMBER	133522
----------	----------	------	---------	------------	-----------	------	---------	------------	--------

COMPENSATOR KITS

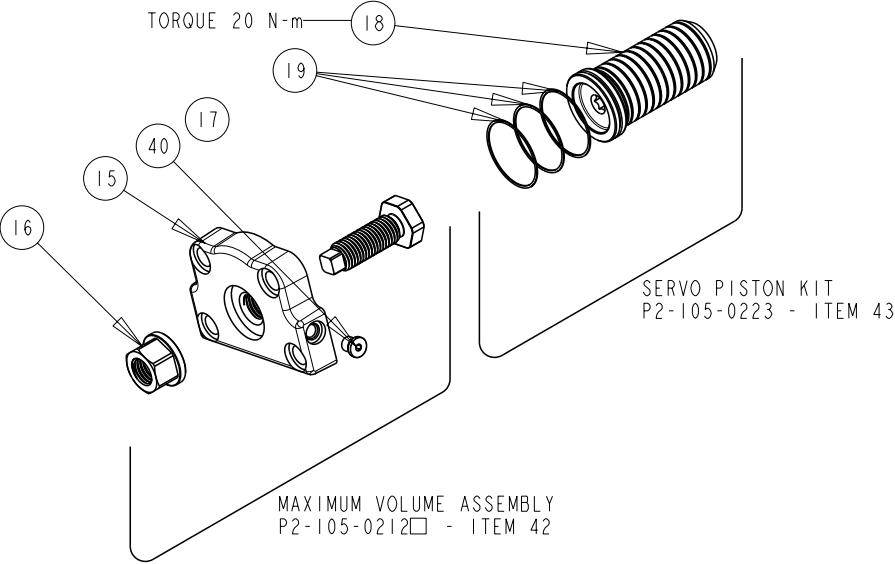
DUAL SPOOL OPTIONS - ITEM 65



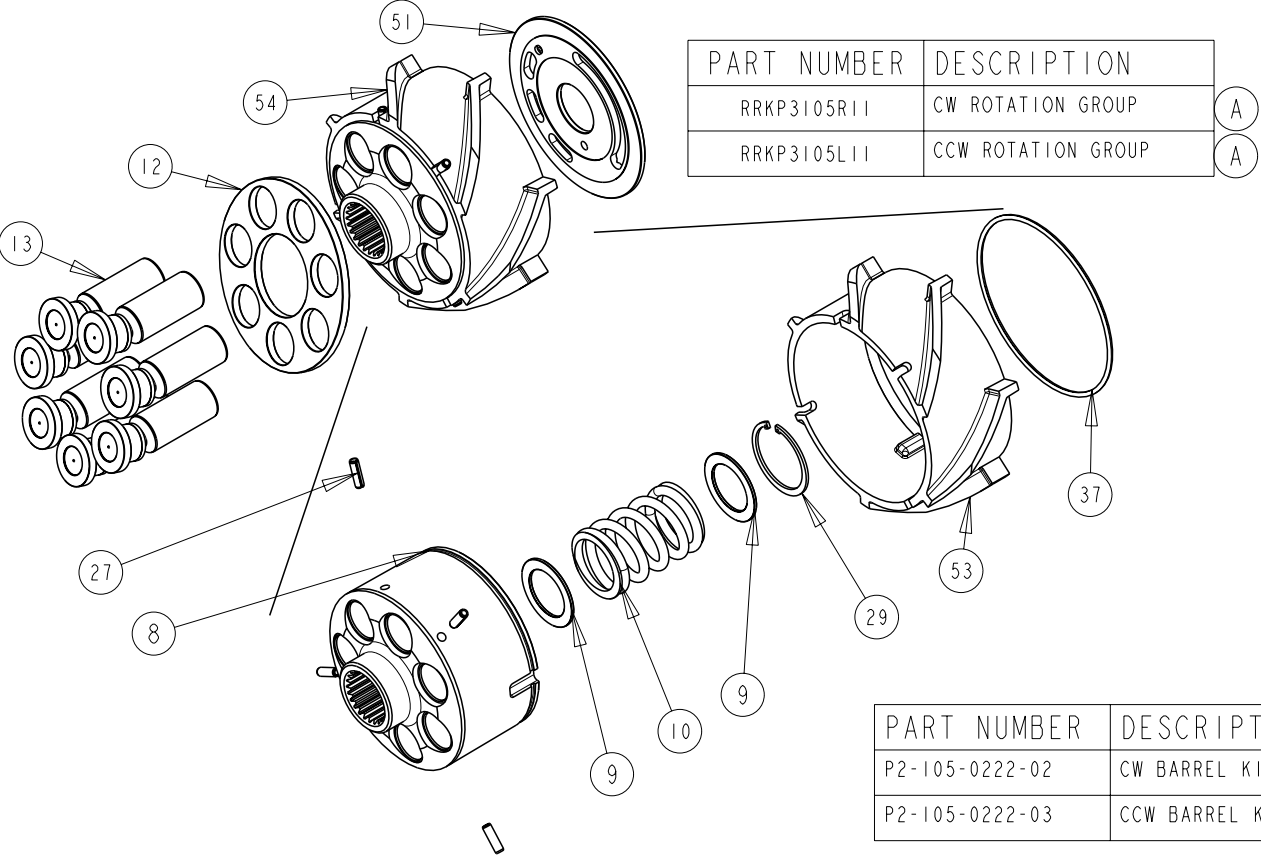
THRU DRIVE KITS



MAX VOLUME ASSEMBLY AND
SERVO PISTON KIT

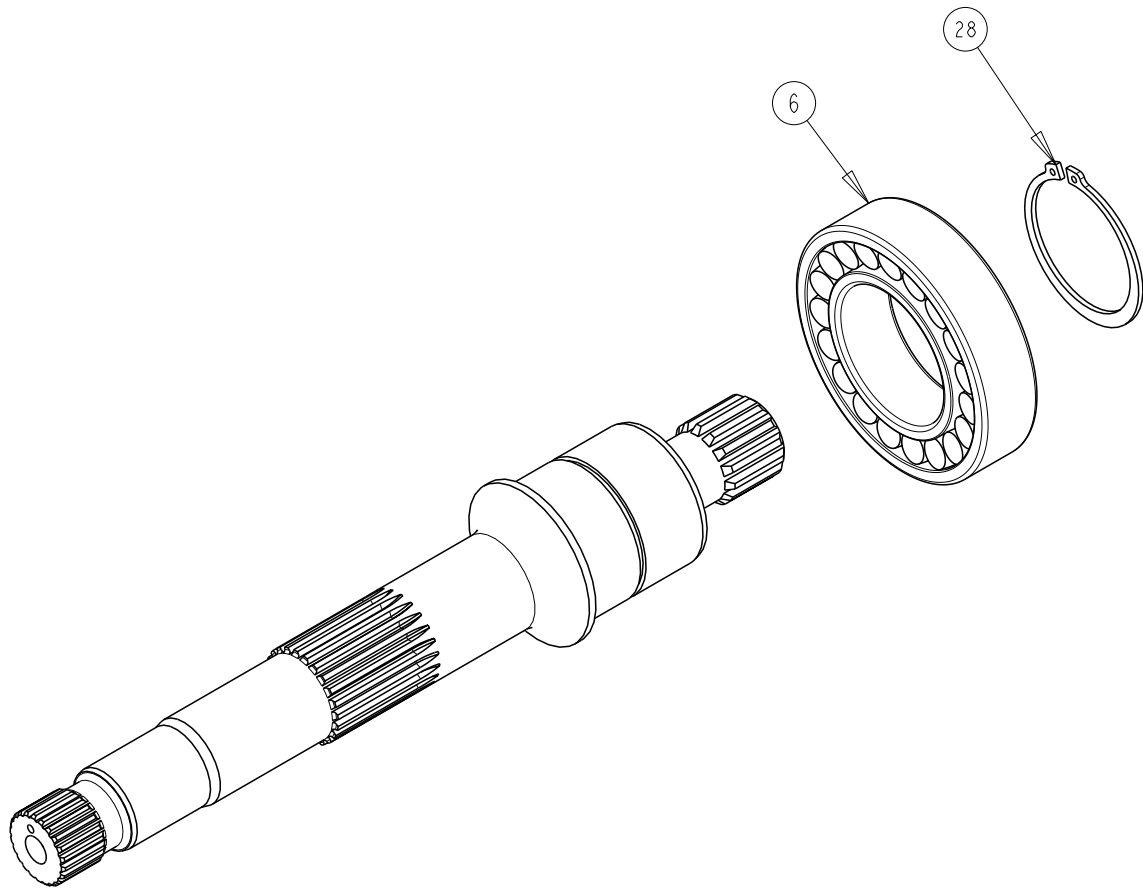


BARREL KIT AND
ROTATION GROUP KIT



TITLE	DRAWING NUMBER	REVISION	STATUS	
SERVICE PARTS P3105 DESIGN SERIES 11	P2-105-0404	A	PR	SHEET 5 OF 7

SHAFT ASSEMBLY KITS
ITEM 57

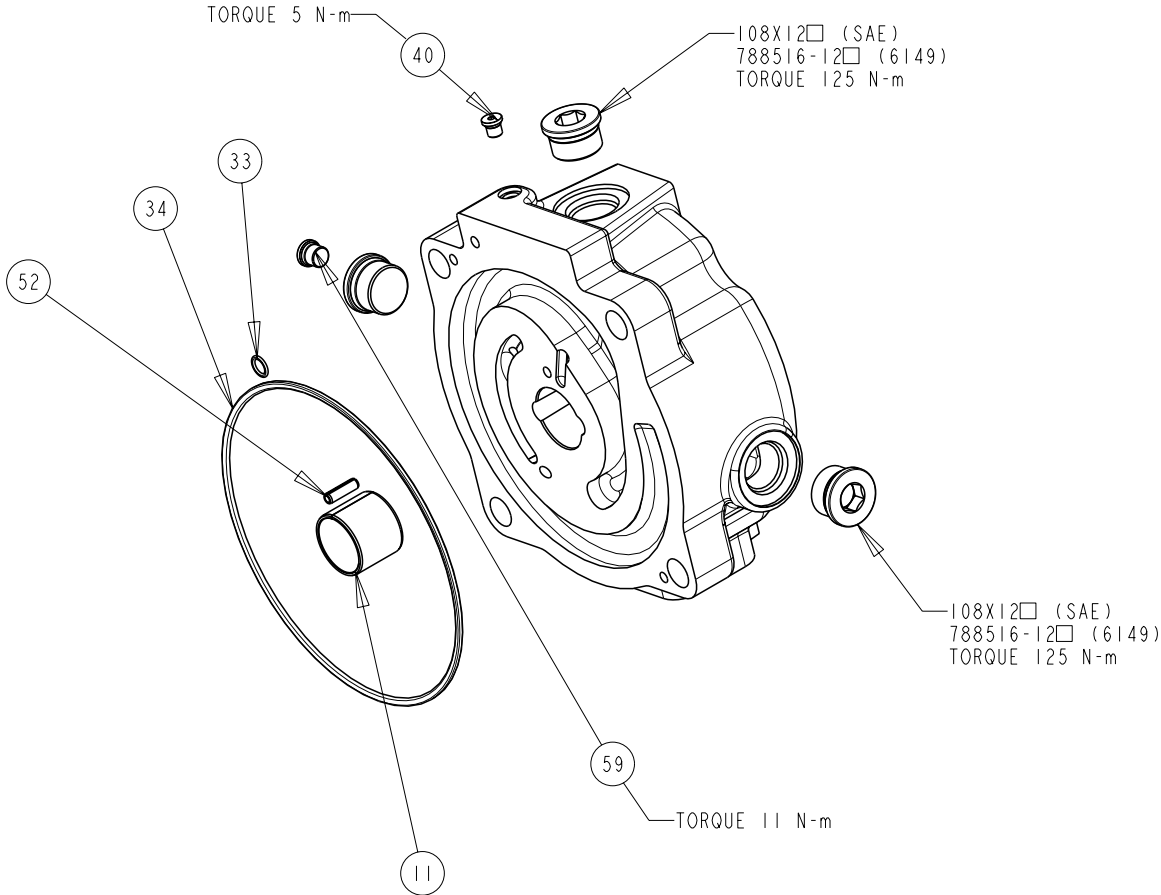


SHAFT ONLY	SHAFT ASSY	DESCRIPTION
P2-105-3525	P2-105-0225-36	C SPLINE THRU
P2-105-3519	P2-105-0225-40	D SPLINE THRU
P2-105-3533	P2-105-0225-46	C KEY THRU
P2-105-3535	P2-105-0225-48	CC KEY THRU
P2-105-3520	P2-105-0225-56	C SPLINE THRU NO UNDERCUT
P2-105-3546	P2-105-0225-60	D SPLINE THRU NO UNDERCUT



DRAWN BY	DATE	CHANGED BY	DATE	ECN NUMBER
E. BOONE	15APR02	B. LARKIN	23MAY02	133522

COVER ASSEMBLY KITS
ITEM 55

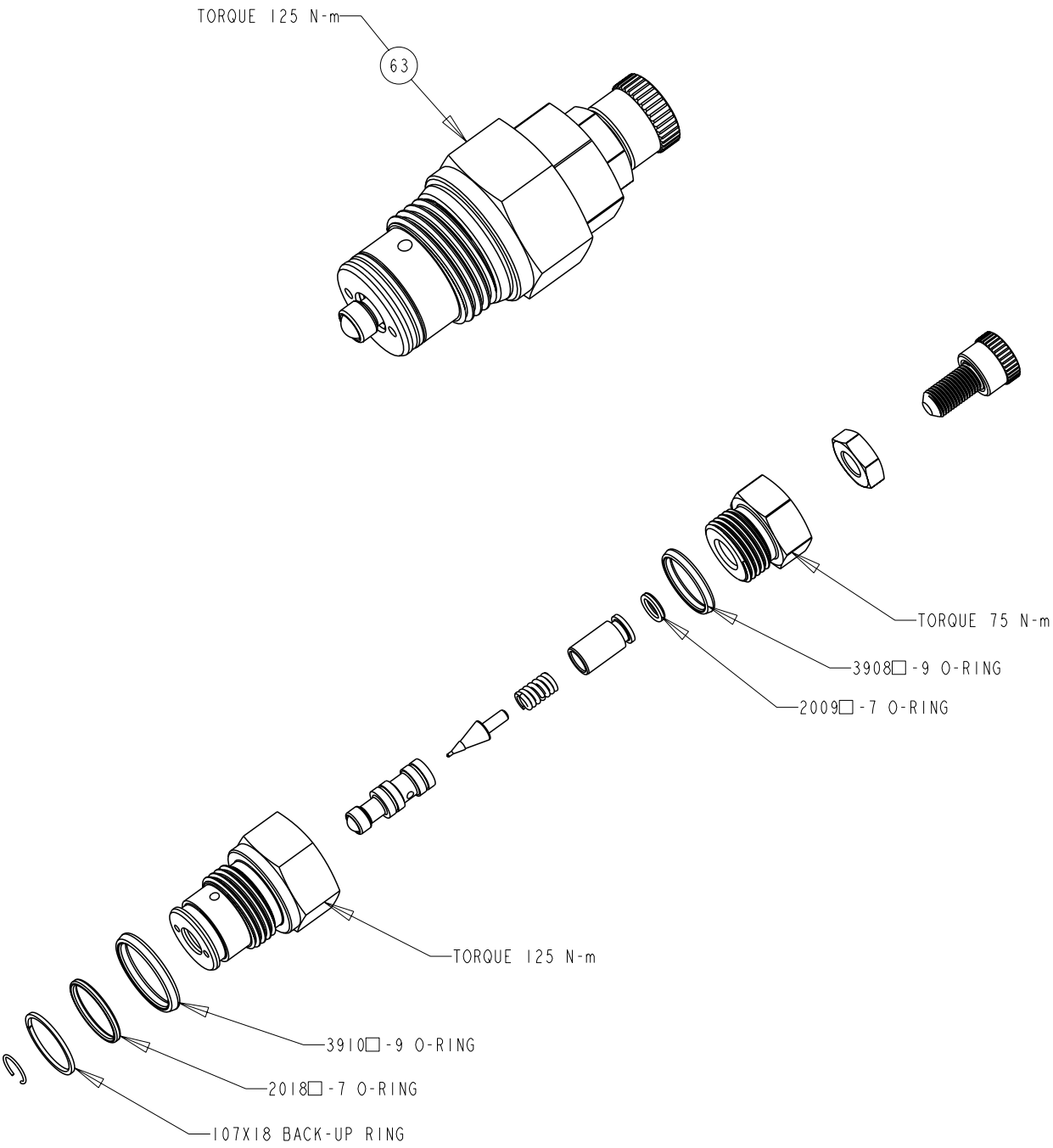


COVER ONLY	COVER ASSY	DESCRIPTION
P2-105-1015-01	P2-105-0226-09	SIDE PORT, CCW, UNC
P2-105-1015-02	P2-105-0226-10	SIDE PORT, CCW, UNC, THRU
P2-105-1015-03	P2-105-0226-11	SIDE PORT, CCW, METRIC
P2-105-1015-04	P2-105-0226-12	SIDE PORT, CCW, METRIC, THRU
P2-105-1016-01	P2-105-0226-13	SIDE PORT, CW, UNC
P2-105-1016-02	P2-105-0226-14	SIDE PORT, CW, UNC, THRU
P2-105-1016-03	P2-105-0226-15	SIDE PORT, CW, METRIC
P2-105-1016-04	P2-105-0226-16	SIDE PORT, CW, METRIC, THRU



TITLE	DRAWING NUMBER	REVISION	STATUS	SHEET
SERVICE PARTS P3105 DESIGN SERIES II	P2-105-0404	A	PR	6 OF 7

TORQUE CONTROL CARTRIDGE P2-000-0803 □ - ITEM 63 (A)



DRAWN BY	DATE	CHANGED BY	DATE	ECN NUMBER
E. BOONE	15APR02	B. LARKIN	23MAY02	133522

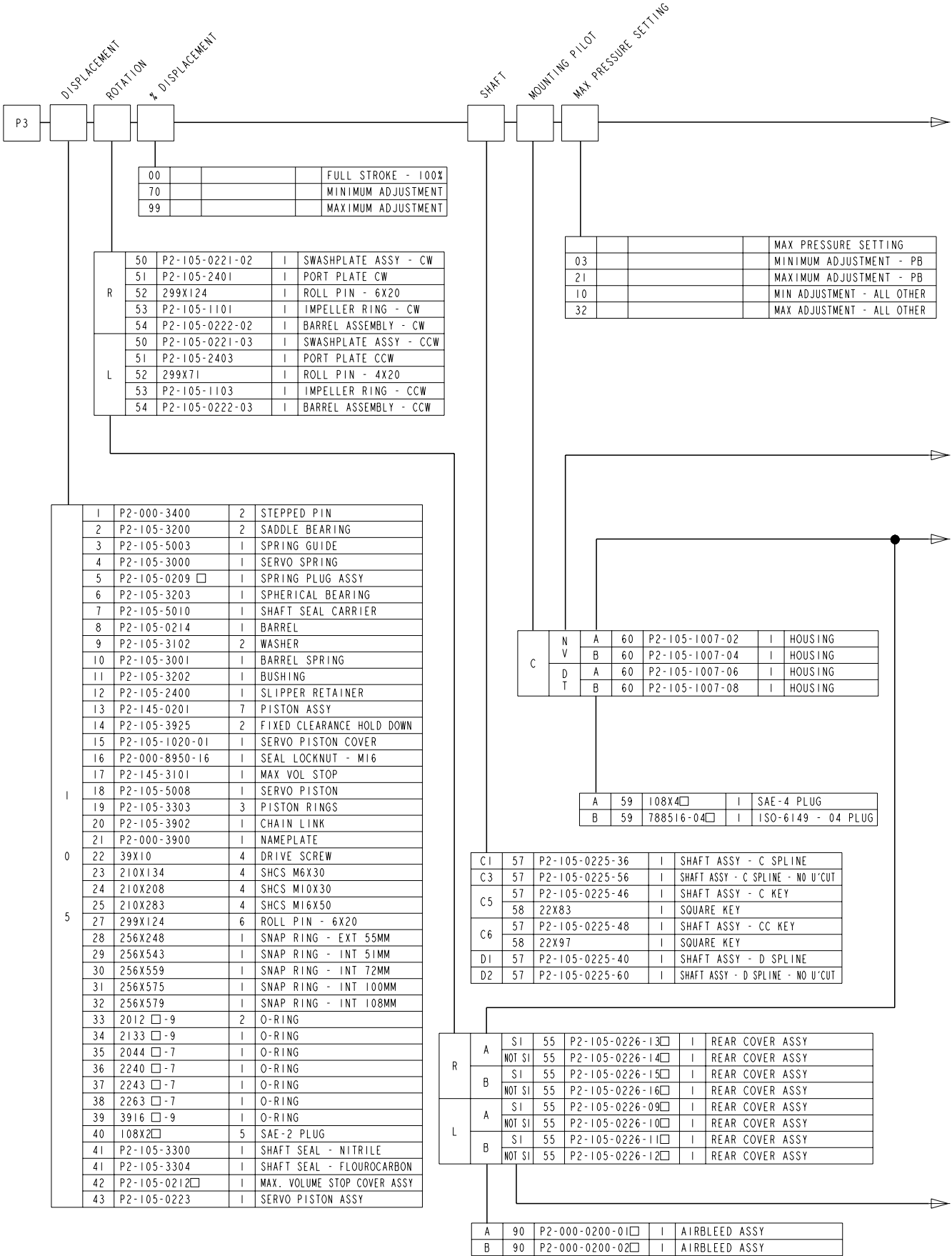
ASSEMBLY, DIS-ASSEMBLY AND REPAIR NOTES

- DISASSEMBLY STEPS FOR ENTIRE PUMP
1. REMOVE COVER SCREWS AND COVER
 2. REMOVE IMPELLER
 3. DE-STROKE PUMP TO MINIMUM ANGLE WITH MAX VOLUME SCREW
 4. REMOVE FIXED CLEARANCE HOLD DOWN SCREWS AND HOLD DOWN PARTS
 5. REMOVE ROTATING GROUP (BARREL, SLIPPER RETAINER AND PISTONS)
 6. REMOVE SHAFT SEAL CARRIER
 7. REMOVE SHAFT
 8. REMOVE BIAS SPRING PLUG, SPRING AND RETAINER
 9. REMOVE MAX. VOLUME ASSY
 10. REMOVE SERVO PISTON ASSY.
 11. REMOVE SWASHPLATE ASSEMBLY

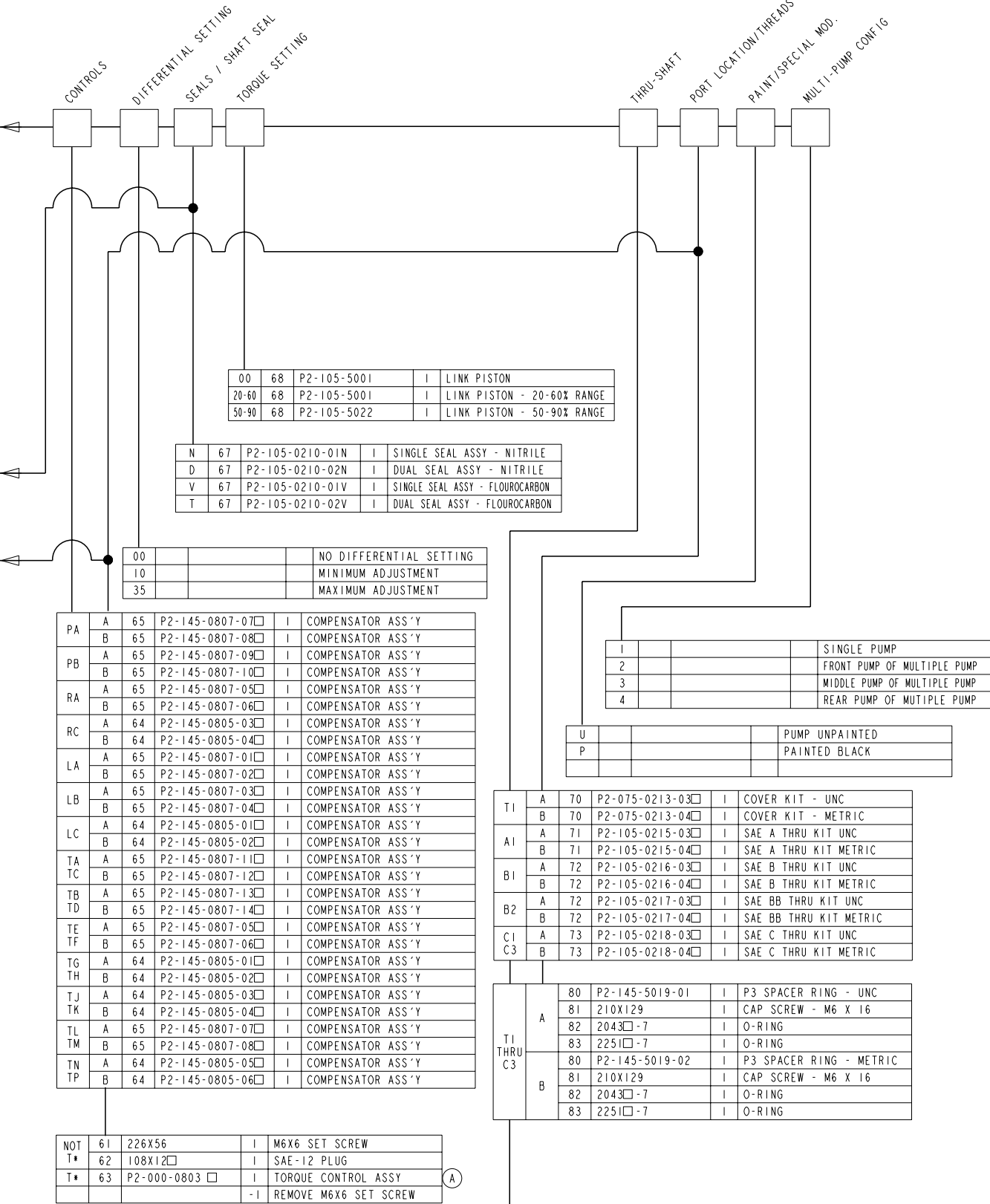
- SHAFT SEAL REPLACEMENT
1. REMOVE SEAL CARRIER ONLY
 2. REMOVE OLD SEAL
 3. INSPECT SHAFT
 4. IF SHAFT IS WORN INSTALL NEW SEAL IN INNER LOCATION FOR SINGLE SEAL APPLICATIONS (SEE SHEET 1).
REPLACE SHAFT FOR DUAL SEAL APPLICATIONS



TITLE	DRAWING NUMBER	REVISION	STATUS	
SERVICE PARTS P3105 DESIGN SERIES 11	P2-105-0404	A	PR	SHEET 7 OF 7



DRAWN BY	DATE	CHANGED BY	DATE	ECN NUMBER
E. BOONE	15ARP02	B. LARKIN	23MAY02	133522



REPLACE □ SYMBOL WITH
"N" FOR NITRILE SEALS AND
"V" FOR FLOUROCARBON SEALS

OTHER AVAILABLE KITS

PART NUMBER	DESCRIPTION
SKP2/P3105□11	SEAL KIT
P2-105-0211	PISTON/SLIPPER KIT (FULL SET)

